



AGENDA

Port of Bandon
 Regular Commission Meeting
 November 18, 2021, 5:00pm
 via ZOOM
www.portofbandon.com/meetings
 for details

A.	Consent Calendar		
i.	October Minutes	Commissioners	A-B
ii.	September Financials	Commissioners	C-M
B.	Presiding Officer and Commissioners Comments		
C.	Ordinances and Resolutions		
D.	Public Contracts and Purchasing		
E.	Public Hearings		
F.	Port Managers Report		
i.	Fall Coquille Chinook Salmon Report		Verbal
ii.	POB Public Fishing Pier Update		Verbal
iii.	Marine Board BF Grant Application(s)		1
iv.	Coquille River Jetty Repairs		2
v.	Farmers Market Parking Strategy		3-4
vi.	Redmon Pond Property Donation		5
G.	Port Staff Reports		
i.	Harbormaster	Shawn/Commissioners	Verbal
ii.	Farmers Market	Peggi/Commissioners	Verbal
H.	Executive Session		
I.	Other Miscellaneous Matters		
J.	Public Comment		
K.	Adjournment		

NOTES:

Port of Bandon
Regular Commission Meeting
October 28, 2021 5:00pm
Via ZOOM
Bandon, OR

Commissioners Present: Reg Pullen, Rick Goche, & Wayne Butler

Commissioners Absent: Donny Goddard and Rod Taylor

Staff: Jeff Griffin - Port Manager, Josh Adamson - Project Manager, Shawn Winchell –
Harbormaster, Peggi Towne – Farmers Market Manager

Volunteer: John Towne – Farmers Market

Guests: Lori Osborne, Michele Zwartjes

Commissioner Pullen opened the meeting at 5:00.

A motion was made by Commissioner Butler to approve the consent calendar. Motion seconded by Commissioner Goche. Motion passes unanimously.

Michele Zwartjes, an endangered species biologist and field office supervisor with the Oregon office for U.S. Fish and Wildlife, gave a presentation on conducting a feasibility study for the reintroduction of sea otters into the Pacific Ocean. Zwartjes said the Fish and Wildlife Service was tasked by Congress to do the feasibility study. The study is to look at the cost, impact and ability to introduce sea otters along the coasts of California, Oregon and Washington. Congress gave the service through the end of 2021 to produce the study. Michele stated that Sea otters do not eat fish, and along the Oregon coast they would likely feed on sea urchins, Dungeness crab and clams. If they were reintroduced, they could help heal the kelp forests, which have struggled to regain a footing after a heat wave and a die off of starfish led to a massive increase in purple urchins. Commissioners asked about predators to the sea otters, reintroduction areas and an interest in healing the kelp forests. Commissioners asked Michele to keep the Port informed of efforts needed to lend support for the study.

Griffin reported on the following:

Billeter Marine is continuing survey work for the ADA fishing pier. There were minor deviations with the construction drawings and they are working with our engineer to address. Work should begin on site starting the second week of November.

The Port is still waiting for final approval of funds appropriated by the Oregon State Legislature for the marina facility project, and will be submitting a grant application to the Oregon State Marine Board for certain eligible facility components.

ART Engineering LLC, recently submitted lab results to PSET for sediment testing review and approval for the sport basin and marina dredging permits. Lab results appear to have come back below levels of concern which, if approved, would allow for the preferred flow lane disposal. Commissioner Goche asked about environmental issues outside of Port facilities that could contaminate sediment located in Port facilities and a discussion followed about the City's storm drain system that empties into the marina. The Commission requested that staff work on developing a plan to address this issue.

With efforts from the Coquille Tribe, Oregon Department of Fish and Wildlife, the Port of Bandon and local volunteers, efforts to collect broodstock at Ferry Creek and Seven Mile have proven somewhat successful. 70 pairs are needed and currently an estimated 70 fish have been collected, 50 of those being male. Efforts will continue for the next few weeks. Commissioners discussed possible changes to release sites, hatchery assistance and tide gates. Commissioner Pullen advised this would be a good discussion for the January Work Session.

Moore Mill has agreed to support a mariculture feasibility study on the Moore Mill log yard. Jeff will be submitting a proposal to Business Oregon for the Port Planning and Marketing Fund with Moore Mill possibly contributing some of the matching funds.

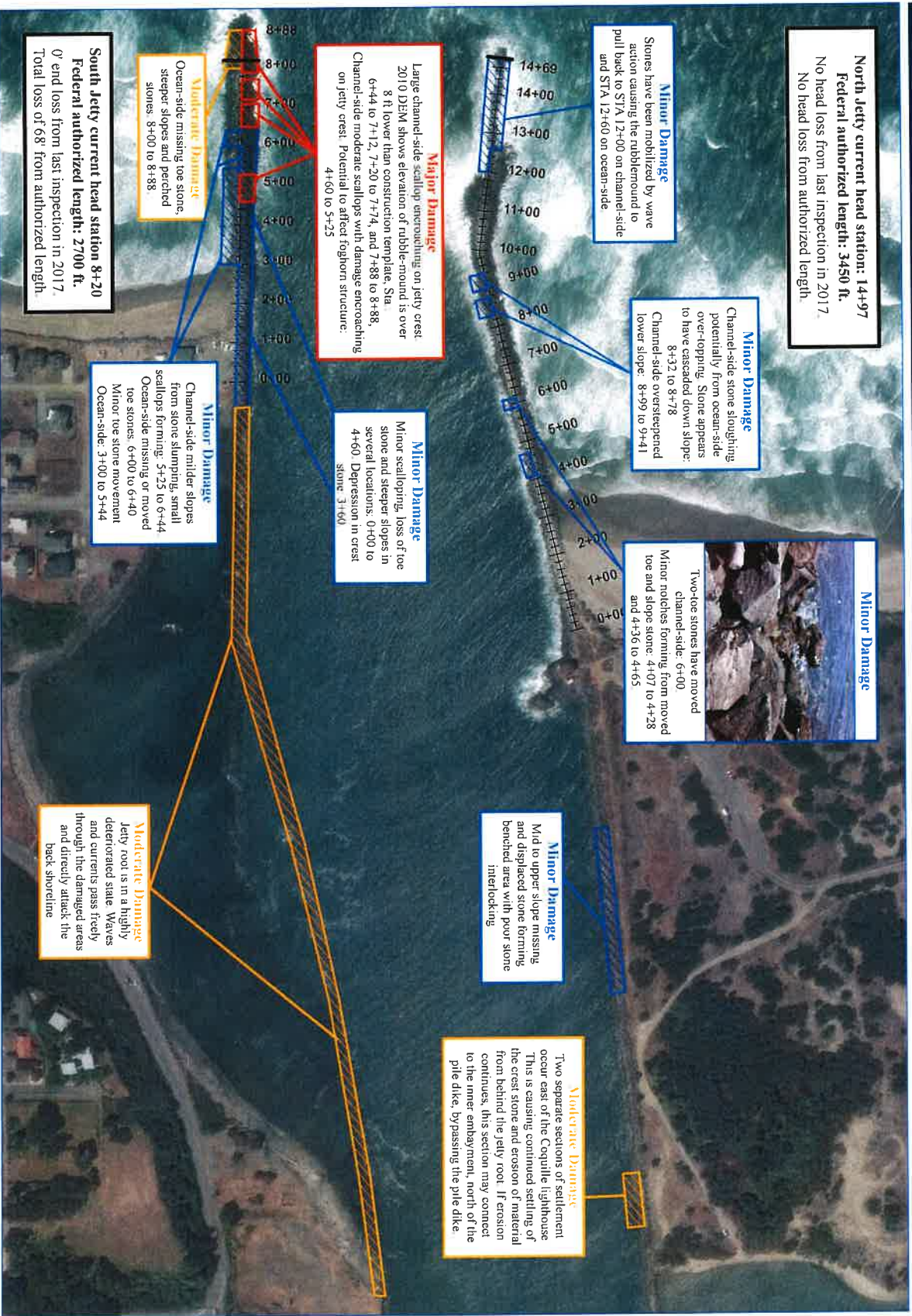
Port Staff Report:

- Shawn showcased one of the finished garage doors. All components are either refurbished or replicate the original design and material.
- The railings on the boardwalk are being replaced as the old ones were in need of repair. Shawn will not be sealing them as before. New railings will grey out for a more nautical look.
- Washed Ashore has approached the Port for placement of Henrietta, a Tiger Rockfish sculpture that would be housed streetside outside the Old Town Marketplace Building. Washed Ashore expressed future partnerships with the Port as the administration has changed and new projects are forming.

Public Comment

None

Respectfully submitted by Joshua Adamson



North Jetty current head station: 14+97
Federal authorized length: 3450 ft.
 No head loss from last inspection in 2017.
 No head loss from authorized length.

Minor Damage
 Stones have been mobilized by wave action causing the rubble mound to pull back to STA 12+00 on channel-side and STA 12+60 on ocean-side

Minor Damage
 Channel-side stone sloughing potentially from ocean-side over-topping. Stone appears to have cascaded down slope: 8+32 to 8+78
 Channel-side oversteepened lower slope: 8+99 to 9+41

Minor Damage
 Two-toe stones have moved channel-side: 5+100
 Minor notches forming from moved toe and slope stone: 4+07 to 4+28 and 4+36 to 4+65

Minor Damage
 Mid to upper slope missing and displaced stone forming interlocking

Moderate Damage
 Two separate sections of settlement occur east of the Coquille lighthouse. This is causing continued settling of the crest stone and erosion of material from behind the jetty root. If erosion continues, this section may connect to the inner embayment, north of the pile dike, bypassing the pile dike.

Major Damage
 Large channel-side scallap encroaching on jetty crest. 2010 DTM shows elevation of rubble-mound is over 8 ft lower than construction template. Sta: 6+44 to 7+12, 7+20 to 7+74, and 7+88 to 8+88.
 Channel-side moderate scallaps with damage encroaching on jetty crest. Potential to affect foghorn structure: 4+60 to 5+25

Minor Damage
 Minor scalloping, loss of toe stone and steeper slopes in several locations: 0+00 to 4+60. Depression in crest. Stone: 3+60

Minor Damage
 Channel-side milder slopes from stone slumping, small scallaps forming: 5+25 to 6+44
 Ocean-side missing or moved toe stones: 6+00 to 6+40
 Minor toe stone movement Ocean-side: 3+00 to 5+44

Moderate Damage
 Ocean-side missing toe stone, steeper slopes and perched stones: 8+00 to 8+88

South Jetty current head station 8+20
Federal authorized length: 2700 ft.
 0' end loss from last inspection in 2017.
 Total loss of 68' from authorized length.

Moderate Damage
 Jetty root is in a highly deteriorated state. Waves and currents pass freely through the damaged areas and directly attack the back shoreline

05 Area Copy of Engineer Printed Drawing
Coquille Jetties North and South

 Date: 20 SEP 18
 Project: 18-001-10-11-18
 Scale: As Shown
 Date: 12 JUL 18
 Scale: As Shown
 Date: 12 JUL 18
 Scale: As Shown
 Date: 12 JUL 18
 Scale: As Shown

Inspection Assessment

- Jetty Crest Extent
- Major Damage
- Moderate Damage
- Minor Damage

Tides during Inspection

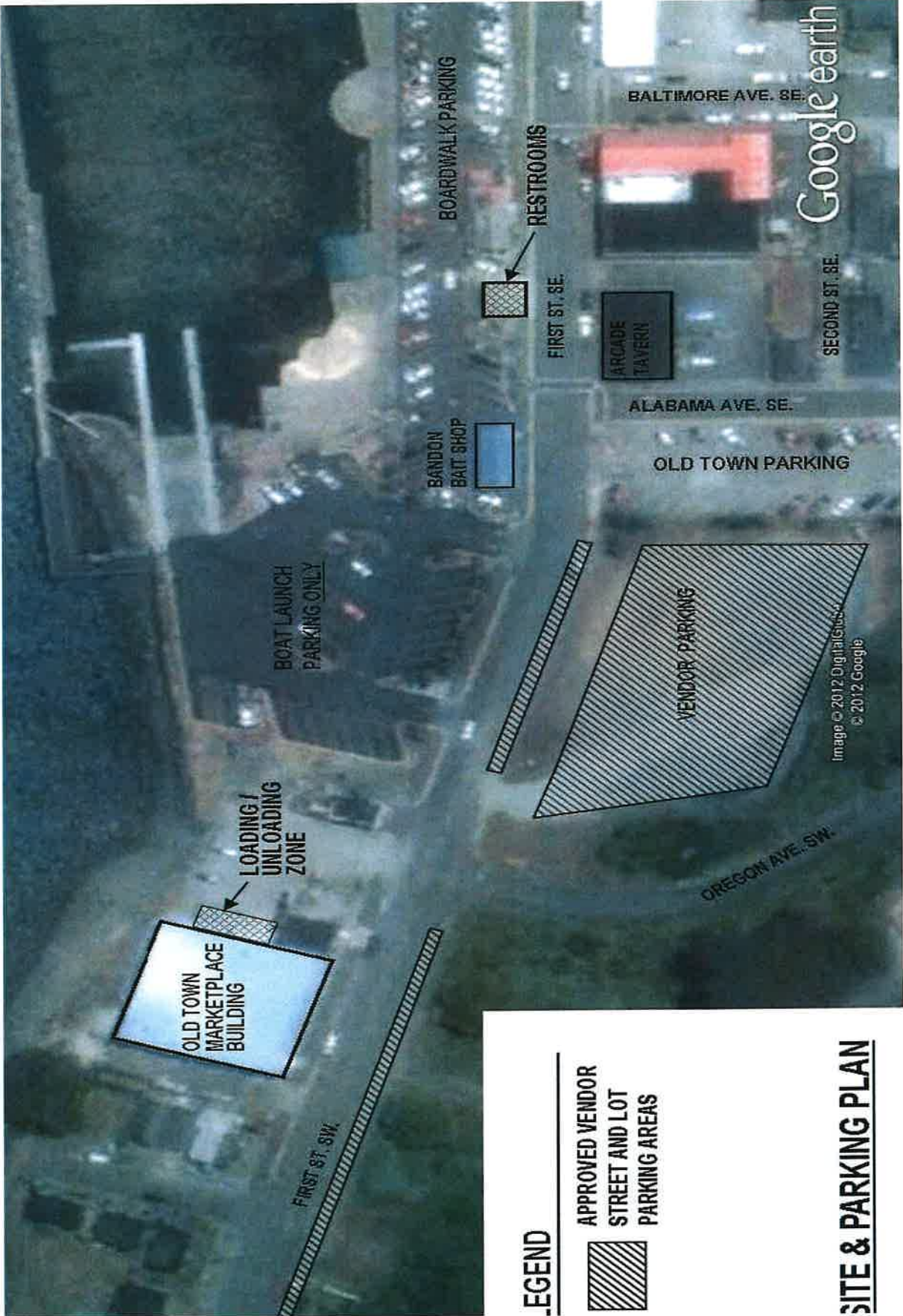
North Jetty: 3.1' MLLW (14:30) (7/10/18) 2.3' MLLW (16:00)

South Jetty: 2.8' MLLW (10:00) (7/12/18) 4.8' MLLW (11:15)

Times in PDT

Scale: 0 to 300 Feet

2



Google earth

Image © 2012 DigitalGlobe
© 2012 Google

LEGEND

- APPROVED VENDOR STREET AND LOT PARKING AREAS



SITE & PARKING PLAN



RED = HARKER

GREEN = VAN LOM

BLUE = LINDSAY

WHITE DOT = PRIVATE/CITY/COUNTY/TRIBE

